

# USER GUIDE AND INSTALLATION MANUAL

## LAMBO HINGE SYSTEM

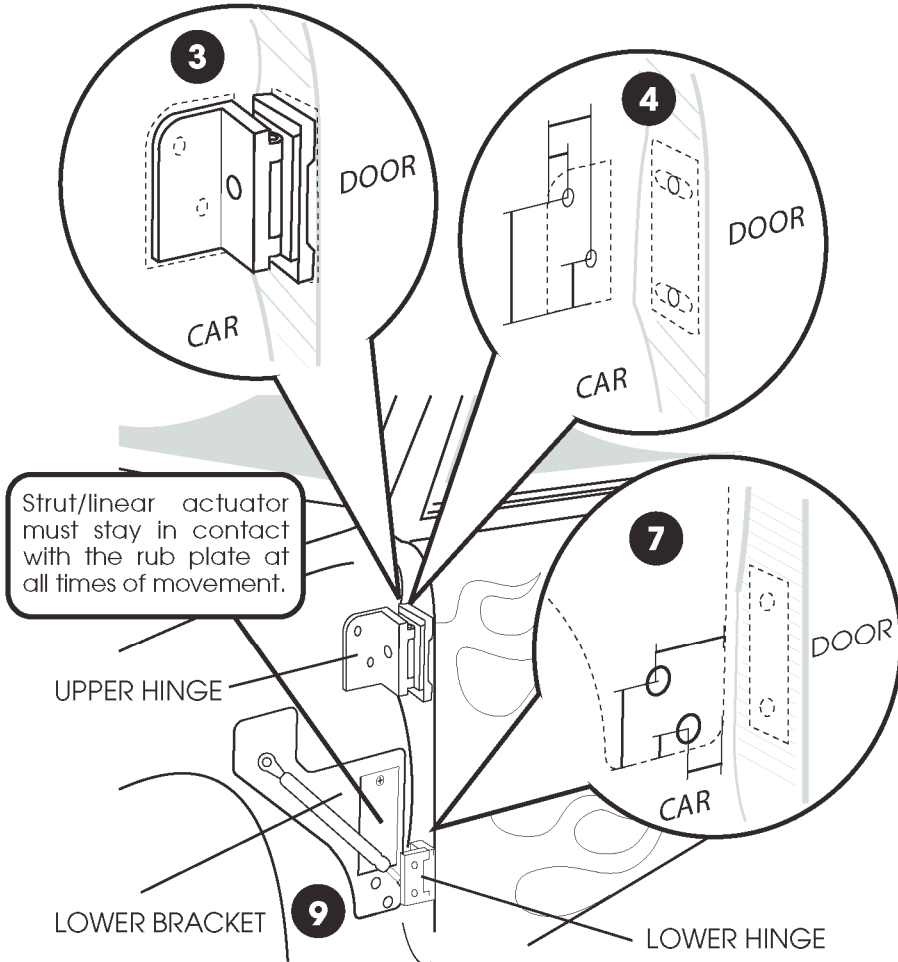
Patent Pending

**LAMBOUN** - standard universal lambo hinge system

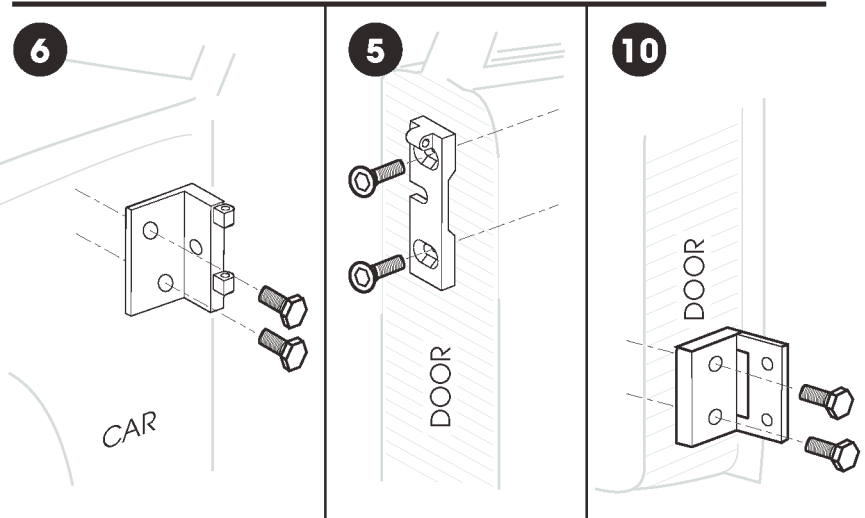
**LAMBODUN** - motorized universal lambo hinge system

**WARNING:** This is a universal kit, and may require custom modifications. AutoLoc™ highly recommends professional installation.

## Installation



- 1** Remove fender and top door hinge
- 2** Close vehicle door. *NOTE: make sure the doors are properly seated.*
- IMPORTANT** Mount the upper hinge using the existing door hinge holes. It is key to mount the upper hinge as high as possible without interfering with the fender or door. Make sure all parts are level and seated tight against the inner fender and door at all times.
- 3** Hold the upper Lambo hinge assembly level and flush with the inner fender and the door. Outline the location of the upper hinge on the car and door.
- 4** Measure vehicle's bolt hole pattern relative to the outline (step 3) and copy these measurements to the upper hinge. Drill holes in upper hinge. *NOTE: Detents should match a Hondas bolt pattern.*
- 5** Bolt the upper Lambo hinge to the door. *NOTE: It may be necessary to drill new holes in the door if your door bolt pattern doesn't match the Lambo bolt pattern. Use tapered flat head bolts, not included.*
- 6** Bolt Upper Hinge to the vehicle. Stock bolts should work if not use Grade 8 bolts.
- 7** Hold the lower bracket level and flush with the inner fender. Outline the location of the bracket on the car.
- 8** Measure vehicle's lower hinge bolt pattern relative to the outline (step 7) and copy these measurements to the lower bracket. Drill holes in the lower bracket. *NOTE: Bolt pattern should match a Hondas.*
- 9** Bolt lower bracket to the vehicle.



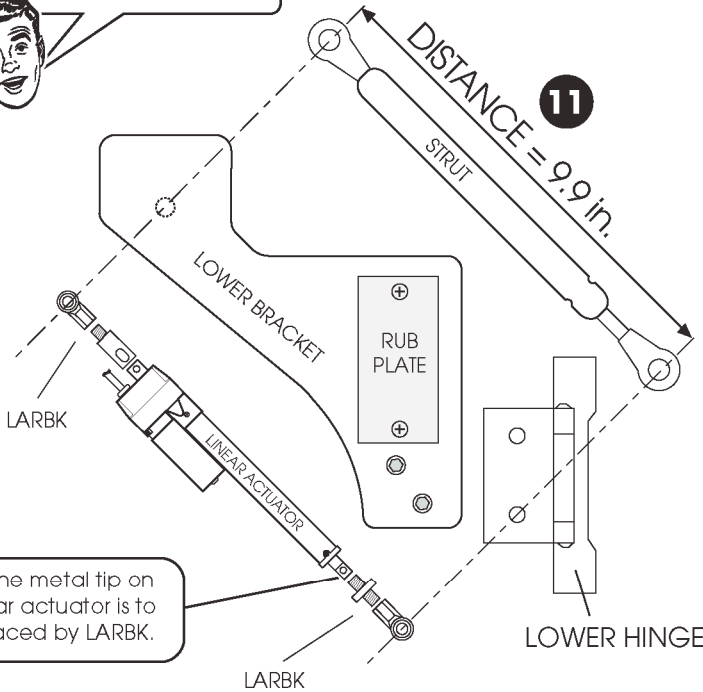
# USER GUIDE AND INSTALLATION MANUAL

## LAMBO HINGE SYSTEM

Patent Pending

### Optional Equipment Available!

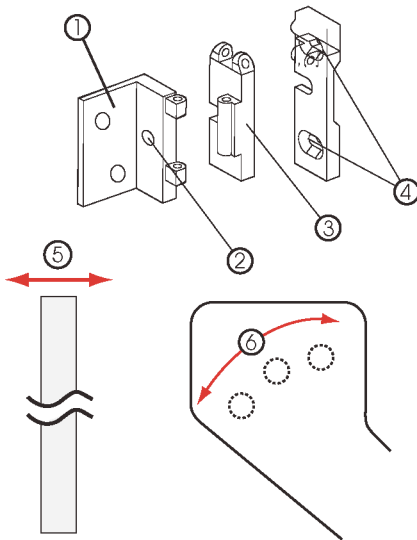
An optional linear actuator and electronic controller is available. Please contact your sales rep.



NOTE: the metal tip on the linear actuator is to be replaced by LARBK.

- 10** Bolt the lower hinge to the door. *NOTE: It may be necessary to drill new holes in the door if your door bolt pattern doesn't match the Lambo bolt pattern. Stock bolts should work and if not use Grade 8 bolts.*
  - 11** Measure 9.9 in. from the center of the lower hinge hole to the lower bracket.
  - 12** Drill and Thread Hole (8 mm 1.25)
  - 13** Attach strut to the lower hinge.
- IMPORTANT:** For installation with our linear actuator refer to the insert with these instructions.
- 14** Carefully open the door and attach the other end of the strut to the mounting plate.
  - 15** Make sure the strut runs on the rub plate, using it as a guide. If the door is hitting the A-pillar you may need to increase the thickness of the rub plate.
  - 16** Repeat the above steps for the other door to complete installation
  - 17** See Fine Tuning to adjust door movement

## Fine Tuning *Once you have the main components installed, it's time to do some fine tuning to insure proper operation. You have six adjustment options.*



- 1 Upper Hinge Bracket Holes**  
The location of the upper hinge and the drilled holes determines the doors pivot point. **(adjusts points A & E)**
- 2 Upright Adjustment Rod**  
The length determines the amount the door will go out and away from the vehicle before it travels up. **(adjusts point G)**
- 3 Vertical Set Screw**  
Adjusts distance between the bottom rear edge of the door and the door frame. **(adjusts points C & D)**
- 4 Slotted Door Holes**  
Allows you to adjust how the top of the door flushes out with the fender. **(adjusts points F)**
- 5 Rub Plate**  
The thickness and how you sculpt the rub plate determines how the bottom edge of the door flushes out, and how far out from car the door goes. **(adjusts points A & C)**
- 6 Strut Holes**  
Where you drill the strut / actuator hole on the lower bracket determines how the door will open. **(adjusts points B)**

